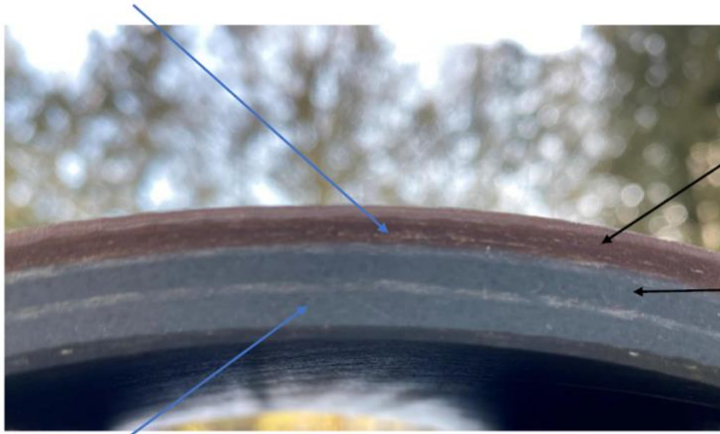


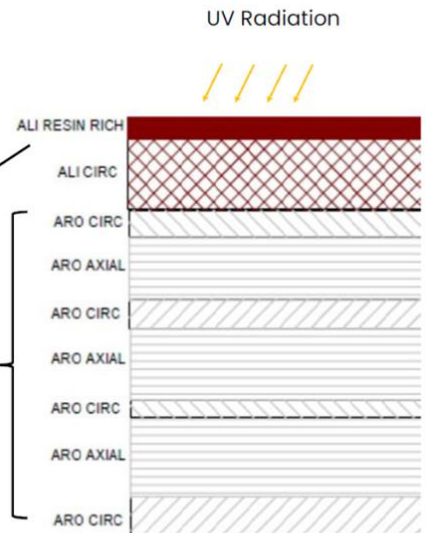
# Detailed Construction

UV Protection and Strength

Aliphatic Resin – UV protection and strength



Aromatic resin – strength



It's what's inside that counts, and that's why our poles are packed with performance. We take a layered approach to resiliency when we engineer our poles.

1. The inner 75% (gray) section of the pole wall is the structural element comprised of alternating circumferential and axial fiberglass wound with aromatic polyurethane resin.
2. The outer 25% (brown in the photo above, but also available in gray) is the robust, 80-year UV solution wound with aliphatic polyurethane resin – compare that to the paint that our competition uses.

When brought together in a single-step manufacturing process, the result is a monolithic laminate that requires no maintenance over its entire service life. This maintains its initial published strength right through to the end, providing the highest overhead line resilience available and is over three times stronger than a comparable wood pole.