



RESILIENT
STRUCTURES

COMPANY OVERVIEW

As an industry pioneer, Resilient Structures designs and manufactures innovative utility structures that harden your grid and help you prepare for the next weather event. Our proprietary aliphatic polyurethane (APU) solutions enable resilient and sustainable grid infrastructure for the world by mitigating costly outages due to infrastructure damage and providing a significant level of protection against wildfires, hurricanes, and other extreme weather, all while increasing safety for utility workers and communities.

OUR PEOPLE

Industry Expertise. Our staff centers around utility professionals with extensive electricity transmission and distribution experience.

Dedication to Mission. Our highly trained utility veterans are dedicated to providing best-in-class field training and ongoing engineering and installation support.

Relentless Innovation. Our team's extensive knowledge of material science and chemical and mechanical engineering allow us to develop unique solutions for our customers to increase grid resilience and reliability.

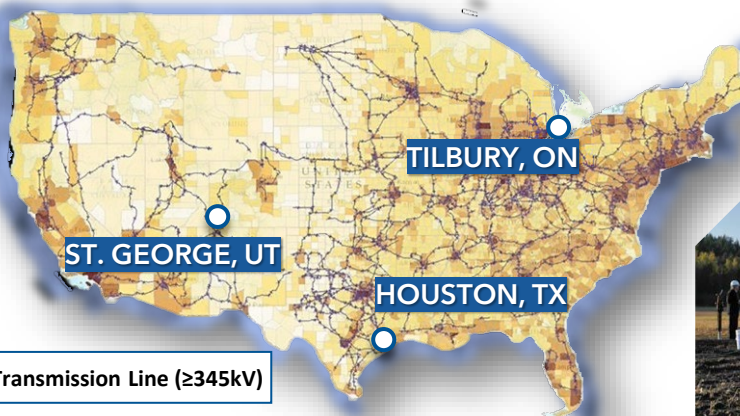


FIELD PROVEN

Resilient Structures' poles exceed industry standards for composite poles set by ASCE, IEEE, ACMA, CEATI, CIGRE and other associations. These poles are characterized using full scale, vertical bend tests per ASTM D1036.

Hundreds of thousand RS poles have been deployed by 500 utilities across 30 countries with zero wind, fire, or ice pole failures.

The Modular Series of filament-wound APU poles offer a wide variety of structures ranging from 30 to over 150 feet in a range of pole load strengths for almost every distribution and transmission application. Tapered modules are wound in lengths of 15 to 30 feet and can be delivered to you fully assembled and drilled ready for installation or can be assembled on site at the utility yard or on the job site, giving you total flexibility.

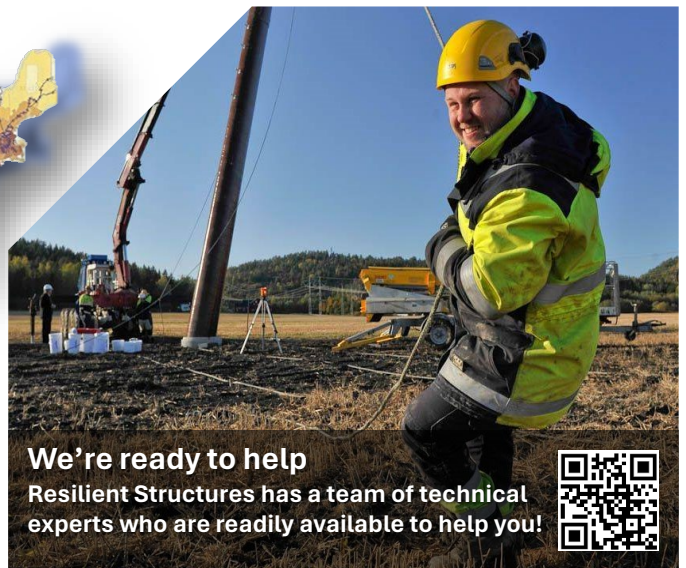


MANUFACTURING FACILITIES

Tilbury, Ontario, Est. 2007

St. George Utah, Est. 2021

Houston, Texas, Est. 2024



We're ready to help

Resilient Structures has a team of technical experts who are readily available to help you!

